



**NEW PRODUCTS AVAILABLE FOR SALE**  
**FEB 2019**



Adatt./Suitable:

**CONTINENTAL**  
5WK9 7005**RENAULT**  
82 00 280 065  
H82 00 327 690**SIEMENS**  
5WK9 7005**SUZUKI**  
13800-67JA0  
13800-67JA0-000**ITEM NOW AVAILABLE FROM PRODUCTION**

- ARTICOLO ORA DISPONIBILE PER LA VENDITA
- ARTICLE DISPONIBLE EN PRODUCTION COURANTE
- JETZT ZUM VERKAUF VERFÜGBARER ARTIKEL
- ARTICULO AHORA DISPONIBLE EN PRODUCCION



Ø in	Ø out	L=mm	
80	80	106	

**RENAULT**

ESPACE IV 2.0 dCi	M9R740, M9R700	01/06 ⇨
GRAND SCÉNIC II 2.0 dCi	M9R700, M9R740	09/05 ⇨
LAGUNA II 2.0 dCi	M9R740, M9R742	08/05 ⇨ 12/07
LAGUNA III 2.0 dCi	M9R742, M9R816	10/07 ⇨
LAGUNA III 2.0 dCi GT	M9R816, M9R824	03/08 ⇨ 12/15
LATITUDE 2.0 dCi 130	M9R756	12/13 ⇨
LATITUDE 2.0 dCi 150	M9R824, M9R804	02/11 ⇨
LATITUDE 2.0 dCi 175	M9R804, M9R700	05/11 ⇨
MEGANE II 2.0 dCi	M9R700, M9R700	09/05 ⇨
SCÉNIC II 2.0 dCi	M9R700, M9R760	09/05 ⇨
VEL SATIS 2.0 dCi	M9R760, F9QB	08/05 ⇨

**SUZUKI**

GRAND VITARA II 1.9 DDiS	F9QB	03/06 ⇨ 08/08
GRAND VITARA II 1.9 DDiS Trazione integrale	F9QB, F9QC	10/05 ⇨ 02/15

493 280



3,5

Adatt./Suitable:

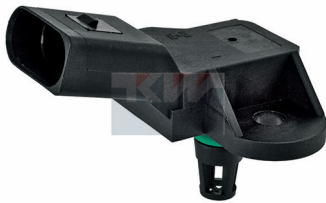
- AUDI**
- 1K0 612 041 EN \*7
- 1K0 612 041 JT \*7
- 1K0 612 041 KG \*7
- BOSCH**
- 0 261 230 169
- 0 261 230 170
- PORSCHE**
- 991 355 577 04 \*3
- 991 355 577 05 \*3
- 991 355 578 02 \*3
- 991 355 578 03 \*3
- SEAT**
- 1K0 612 041 EP \*7
- 1K0 612 041 KG \*7
- 7N0 612 041 \*7
- 3T0 612 041 F \*7
- SKODA**
- 1K0 612 041 EP \*7
- 1K0 612 041 HK \*3
- 1K0 612 041 KG \*7
- 3T0 612 041 D \*7
- 3T0 612 041 H \*7
- 3T0 612 041 K \*7
- VW**
- 1K0 612 041 EM \*7
- 1K0 612 041 EN \*7
- 1K0 612 041 EP \*7
- 1K0 612 041 GD \*7
- 1K0 612 041 HK \*3
- 1K0 612 041 HT \*7
- 1K0 612 041 JT \*7
- 1K0 612 041 KG \*7
- 1K0 612 041 KH \*7
- 1K0 612 041 KJ \*3
- 1K0 906 207 A
- 3AA 612 041 AH \*3
- 3AA 612 041 D \*7
- 5N0 612 041 BG \*7
- 7N0 612 041 \*7
- 7N0 612 041 F \*7

- \*3 without connecting pipe
- senza tubo raccordo
- sans tuyau de raccordement
- ohne Anschlussrohr
- sin tubo de conexión

- \*7 without connector parts
- senza pezzi raccordo
- sans raccords
- ohne Anschlusssteile
- sin piezas de conexión

- NEW - ITEM NOW AVAILABLE FROM PRODUCTION**
- NUOVO - ARTICOLO ORA DISPONIBILE PER LA VENDITA
- NOUVEAU - ARTICLE DISPONIBLE EN PRODUCTION COURANTE
- NEU - JETZ ZUM VERKAUF VERFÜGBARER ARTIKEL
- NUEVO - ARTICULO AHORA DISPONIBLE EN PRODUCCION

MARKET DIFFUSION: MEDIUM



kPa	mV	
-3,8 - 104,2	500 - 4500	

AUDI		
A3 II 1.2 TSI	CBZB	04/10 ⇨ 08/12
A3 II 1.4 TFSI	CAXC, CAXC	09/07 ⇨ 08/12
A3 II 1.6	BSE	05/03 ⇨ 08/12
A3 II SPORTBACK 1.2 TSI	CBZB	04/10 ⇨ 03/13
A3 II SPORTBACK 1.4 TFSI	CAXC, CAVA	09/07 ⇨ 03/13
A3 II SPORTBACK 1.6	BSE	09/04 ⇨ 03/13
PORSCHE		
911 VI 3.0 Carrera	MDC.KA	11/15 ⇨
911 VI 3.0 Carrera 4	MDC.KA	11/15 ⇨
911 VI 3.0 Carrera 4S	MDC.HA	11/15 ⇨
911 VI 3.0 Carrera S	MDC.HA	11/15 ⇨
911 VI 3.4 Carrera	MA1.04	12/11 ⇨
911 VI 3.4 Carrera 4	MA1.04	11/12 ⇨
911 VI 3.8 Carrera 4S	MA1.03	11/12 ⇨
911 VI 3.8 Carrera 4S / 4 GTS	MA1.03	11/12 ⇨
911 VI 3.8 Carrera S	MA1.03	12/11 ⇨
911 VI 3.8 Carrera S / GTS	MA1.03	07/12 ⇨
911 VI 3.8 GT3	MA1.75	08/13 ⇨
911 VI 3.8 Turbo	MA1.71	09/13 ⇨
911 VI 3.8 Turbo S	MA1.71	09/13 ⇨
911 VI 4.0 GT3 RS / R	MA1.76	04/15 ⇨
BOXSTER III 2.7	MA1.22	04/12 ⇨
BOXSTER III 3.8	MDB.XA	07/15 ⇨
BOXSTER III GTS 3.4	--	02/14 ⇨
BOXSTER III S 3.4	MA1.23	04/12 ⇨
CAYMAN II 2.7	MA1.22	03/13 ⇨
CAYMAN II 3.8 GT4	MDB.XA	01/15 ⇨
CAYMAN II GTS 3.4	--	02/14 ⇨
CAYMAN II S 3.4	MA1.23	03/13 ⇨
SEAT		
ALHAMBRA III 1.4 TSI	CAVA, CDA	06/10 ⇨
LEON II 1.4 TSI	CAXC	11/07 ⇨ 12/12
TOLEDO III 1.4 TSI	CAXC	11/07 ⇨ 05/09

SKODA		
SUPERB II 1.8 TSI 4x4	CDA, BLG	11/08 ⇨ 05/15
SUPERB II 2.0 TDI 4x4	CBBB	09/08 ⇨ 05/15
YETI 1.2 TSI	CYVB	05/15 ⇨ 12/17
YETI 1.4 TSI	CZCA	05/15 ⇨ 12/17
YETI 1.4 TSI 4x4	CZDA	05/15 ⇨ 12/17
VW		
CC 1.4 TSI	CZDA	05/15 ⇨ 12/16
CC 1.4 TSI MultiFuel	CKMA	11/11 ⇨ 12/16
GOLF V 1.4 TSI	BLG, CBZA	11/05 ⇨ 12/13
GOLF V 1.6	BSE	01/04 ⇨ 07/09
GOLF VI 1.2 TSI	CBZA, CAVD	11/09 ⇨
GOLF VI 1.4	CNWA	04/11 ⇨ 05/12
GOLF VI 1.4 TSI	CAVD, BSE	10/08 ⇨
GOLF VI 1.6	BSE, CAVD	01/09 ⇨
GOLF VI 2.0 TSI	CULC	11/13 ⇨ 05/16
JETTA V 1.4 TSI	CAVD, CJZD	05/07 ⇨ 10/10
JETTA VI 1.2 TSI	CJZD, CAXA	02/11 ⇨
JETTA VI 1.4 TSI	CAXA, CAVD	04/11 ⇨
PASSAT V 1.4 TSI	CTHD	11/12 ⇨ 12/14
PASSAT V 1.4 TSI MultiFuel	CKMA	11/10 ⇨ 12/14
PASSAT CC 1.4 TSI MultiFuel	CKMA	01/11 ⇨ 01/12
SCIROCCO III 1.4 TSI	CAVD, CAVA	05/08 ⇨
SHARAN II 1.4 TSI	CAVA, CAWA	05/10 ⇨
TIGUAN I 2.0 TFSI	CCTB	05/08 ⇨
TIGUAN I 2.0 TFSI 4motion	CAWA, CCZB	09/07 ⇨
TIGUAN I 2.0 TSI 4motion	CCZB, CAVB	05/11 ⇨
TOURAN I 1.2 TSI	CBZB	05/10 ⇨ 05/15
TOURAN I 1.4 FSI	CAVB	11/06 ⇨ 05/10
TOURAN I 1.4 TSI	CAVB, M273.961	02/06 ⇨ 05/15
TOURAN I 1.4 TSI EcoFuel	CDGA	05/09 ⇨ 05/15

493 340



3,5

Adatt./Suitable:

- ATE**
- 10.0522-9976.1
- 10.0522-9996.1
- BMW**
- 34 33 6 788 808
- MERCEDES-BENZ**
- A 000 905 45 00
- A 006 542 38 18
- NEW - ITEM NOW AVAILABLE FROM PRODUCTION**
- NUOVO - ARTICOLO ORA DISPONIBILE PER LA VENDITA
- NOUVEAU - ARTICLE DISPONIBLE EN PRODUCTION COURANTE
- NEU - JETZ ZUM VERKAUF VERFÜGBARER ARTIKEL
- NUEVO - ARTICULO AHORA DISPONIBLE EN PRODUCCION

MARKET DIFFUSION: MEDIUM



kPa	mV	
-80 - 6,8	1279 - 4500	

BMW		
X6 I ActiveHybrid	N63B44A	01/09 ⇨ 10/11
X6 I ActiveHybrid xDrive	N63B44A	01/09 ⇨ 10/11
MERCEDES-BENZ		
CLASSE B I B 150	M266.920	03/05 ⇨ 11/11
CLASSE B I B 160	M266.920	04/09 ⇨ 11/11
CLASSE B I B 170	M266.940	03/05 ⇨ 11/11
CLASSE B I B 170 NGT	M266.960	04/08 ⇨ 11/11
CLASSE B I B 180	M266.940	04/09 ⇨ 11/11
CLASSE B I B 180 CDI	OM640.940	03/05 ⇨ 11/11
CLASSE B I B 180 NGT	M266.960	04/08 ⇨ 11/11
CLASSE B I B 200	M266.960	03/05 ⇨ 11/11
CLASSE B I B 200 CDI	OM640.941	03/05 ⇨ 11/11
CLASSE B I B 200 TURBO	M266.980	03/05 ⇨ 11/11
CLASSE SV CL 500	M273.961, M273.968	06/06 ⇨ 12/13
CLASSE SV CL 500 4-matic	M273.968, M156.984	02/08 ⇨ 12/13
CLASSE SV CL 550 [JPN]	M273.961	06/06 ⇨
CLASSE SV CL 550 [USA]	M273.961	06/06 ⇨
CLASSE SV CL 550 4-matic [JPN]	M273.968	02/08 ⇨
CLASSE SV CL 550 4-matic [USA]	M273.968	02/08 ⇨

MERCEDES-BENZ		
CLASSE SV CL 600	M275.953	05/06 ⇨ 12/13
CLASSE SV CL 63 AMG	M156.984, M275.982	10/06 ⇨ 12/13
CLASSE SV CL 65 AMG	M275.982, OM642.930	10/06 ⇨ 12/13
CLASSE SV S 250 CDI	OM651.961	01/11 ⇨ 12/13
CLASSE SV S 280	M272.946	08/06 ⇨ 12/13
CLASSE SV S 300	M272.946	08/06 ⇨ 12/13
CLASSE SV S 320 CDI	OM642.930, OM642.932	10/05 ⇨ 12/13
CLASSE SV S 320 CDI 4-matic	OM642.932, M156.984	10/05 ⇨ 12/13
CLASSE SV S 350	M272.965	10/05 ⇨ 12/13
CLASSE SV S 350 4-matic	M272.975	02/08 ⇨ 12/13
CLASSE SV S 350 BlueTec	OM642.862	04/11 ⇨ 12/13
CLASSE SV S 350 BlueTEC 4-matic	OM642.868	04/11 ⇨ 12/13
CLASSE SV S 350 CDI	OM642.930	06/09 ⇨ 12/13
CLASSE SV S 350 CDI 4-matic	OM642.932	01/09 ⇨ 12/10
CLASSE SV S 350 CGI	M276.950	04/11 ⇨ 12/13
CLASSE SV S 350 CGI 4-matic	M276.950	04/11 ⇨ 12/13
CLASSE SV S 400 Hybrid	M272.974	01/09 ⇨ 12/13
CLASSE SV S 420 CDI	OM629.911	10/06 ⇨ 12/09
CLASSE SV S 450	M273.922	12/05 ⇨ 12/13
CLASSE SV S 450 4-matic	M273.924	12/05 ⇨ 12/13
CLASSE SV S 500	M273.961	10/05 ⇨ 12/13
CLASSE SV S 500 4-matic	M273.968	10/05 ⇨ 12/13
CLASSE SV S 500 CGI	M278.932	04/11 ⇨ 12/13
CLASSE SV S 500 CGI 4-matic	M278.932	03/11 ⇨ 12/13
CLASSE SV S 550 [JPN]	M273.961	10/05 ⇨
CLASSE SV S 550 [USA]	M273.961	10/05 ⇨
CLASSE SV S 550 4-matic [JPN]	M273.968	10/05 ⇨
CLASSE SV S 550 4-matic [USA]	M273.968	10/05 ⇨
CLASSE SV S 600	M275.953	12/05 ⇨ 12/13
CLASSE SV S 63 AMG	M156.984, M275.982	10/06 ⇨ 12/13
CLASSE SV S 65 AMG	M275.982, M275.982	12/05 ⇨ 12/13